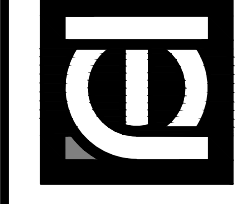
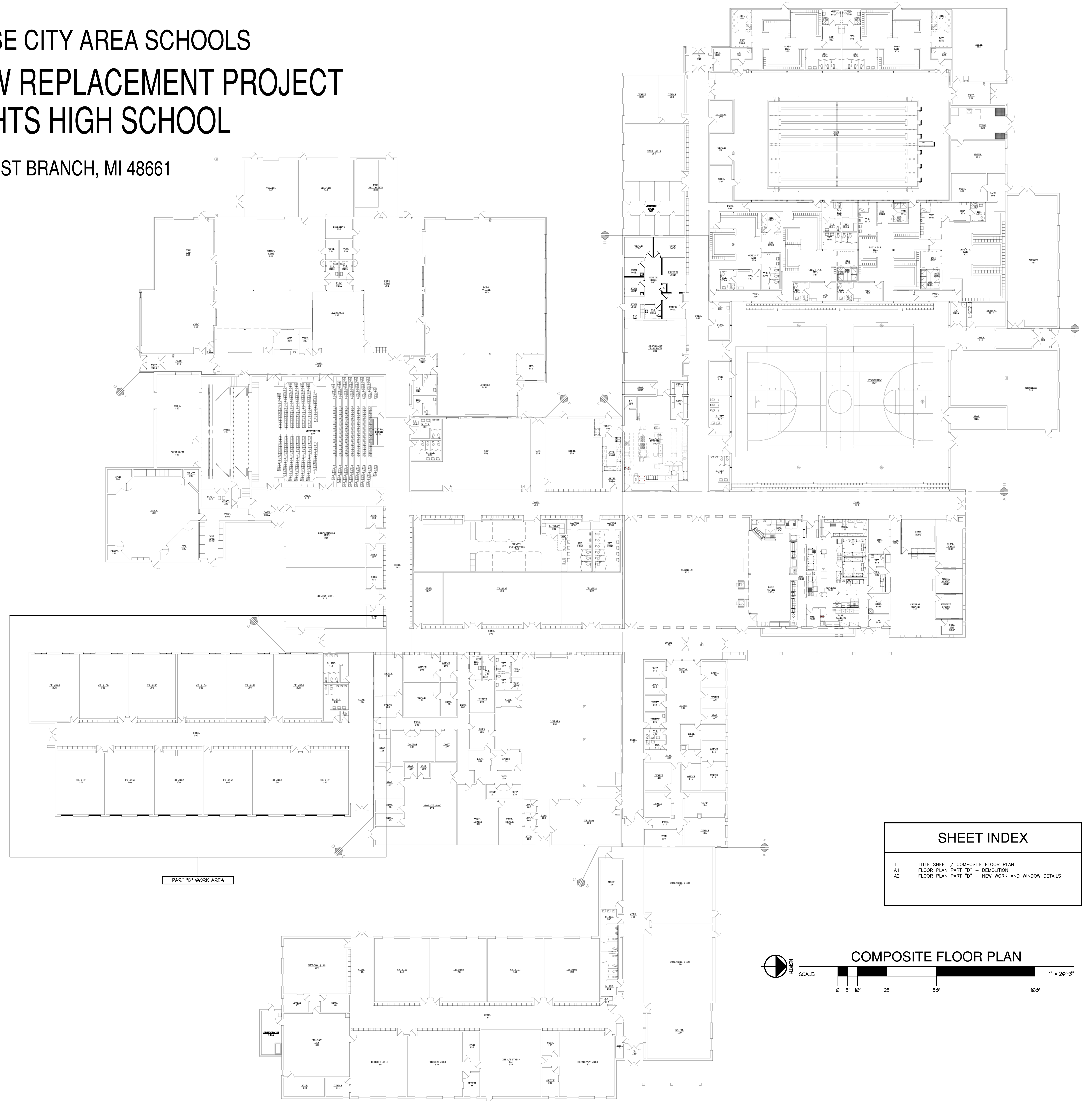
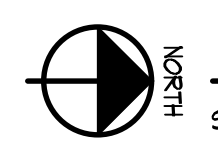
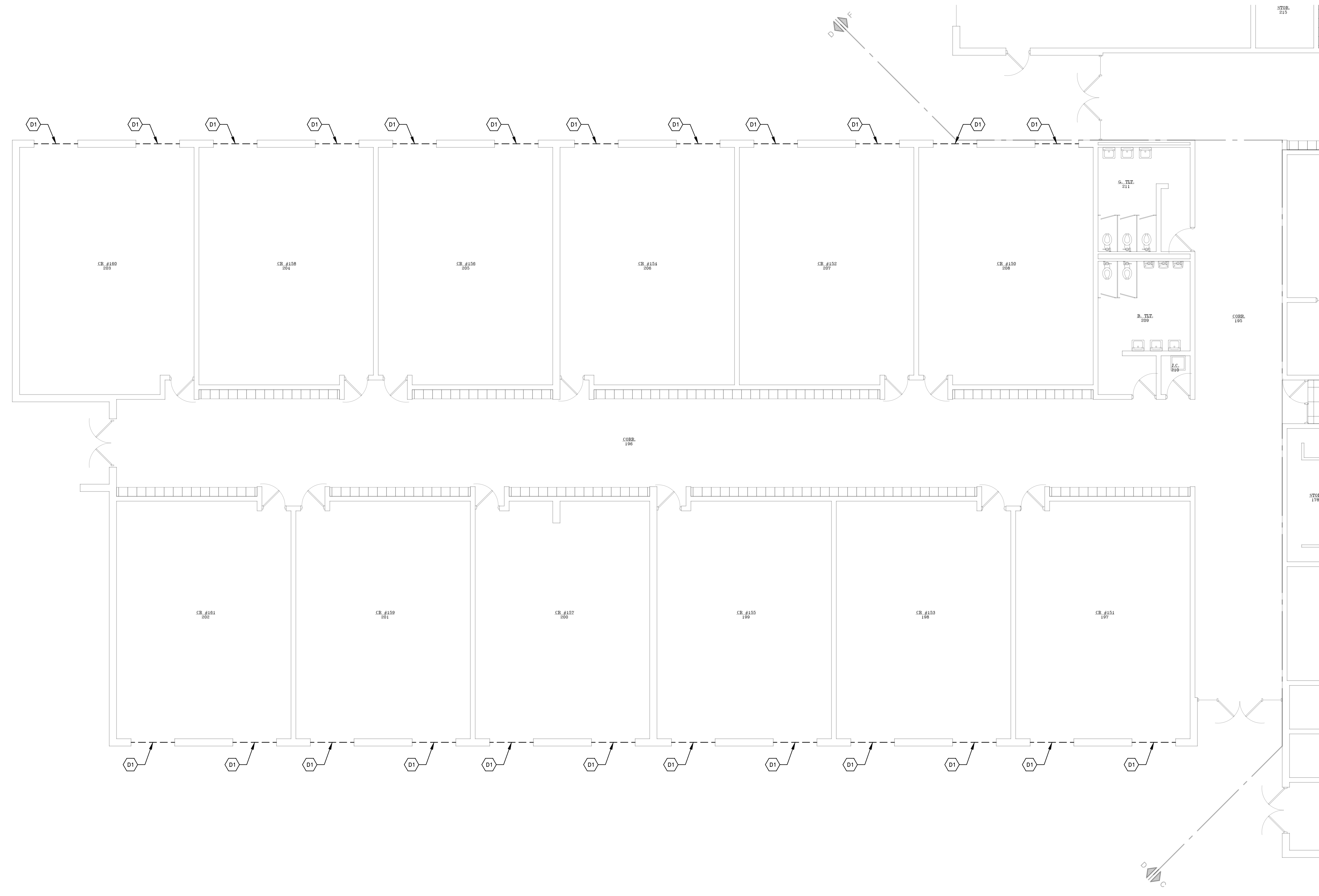


# WEST BRANCH - ROSE CITY AREA SCHOOLS 2024 DOOR AND WINDOW REPLACEMENT PROJECT OGEMAW HEIGHTS HIGH SCHOOL

960 HWY. M33, WEST BRANCH, MI 48661





**FLOOR PLAN PART "D" - DEMOLITION**

SCALE:

1/8" = 1'-0"

**GENERAL DEMOLITION NOTES**

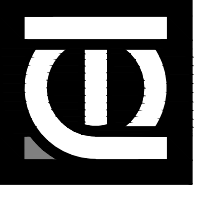
REMOVE EX'G ASSEMBLIES TO THE EXTENT REQUIRED FOR THE INSTALLATION OF NEW WORK, AND TO ALLOW FOR CONNECTION OF NEW WORK TO EX'G ADJACENT CONSTRUCTION. KEYED DEMOLITION NOTES ARE GENERAL IN NATURE. ALL EX'G CONDITIONS ARE TO BE FIELD VERIFIED. CONTRACTOR SHALL MAKE NECESSARY ADJUSTMENTS TO DEMOLITION AS REQ'D TO ACHIEVE THE OVERALL DESIGN INTENT.

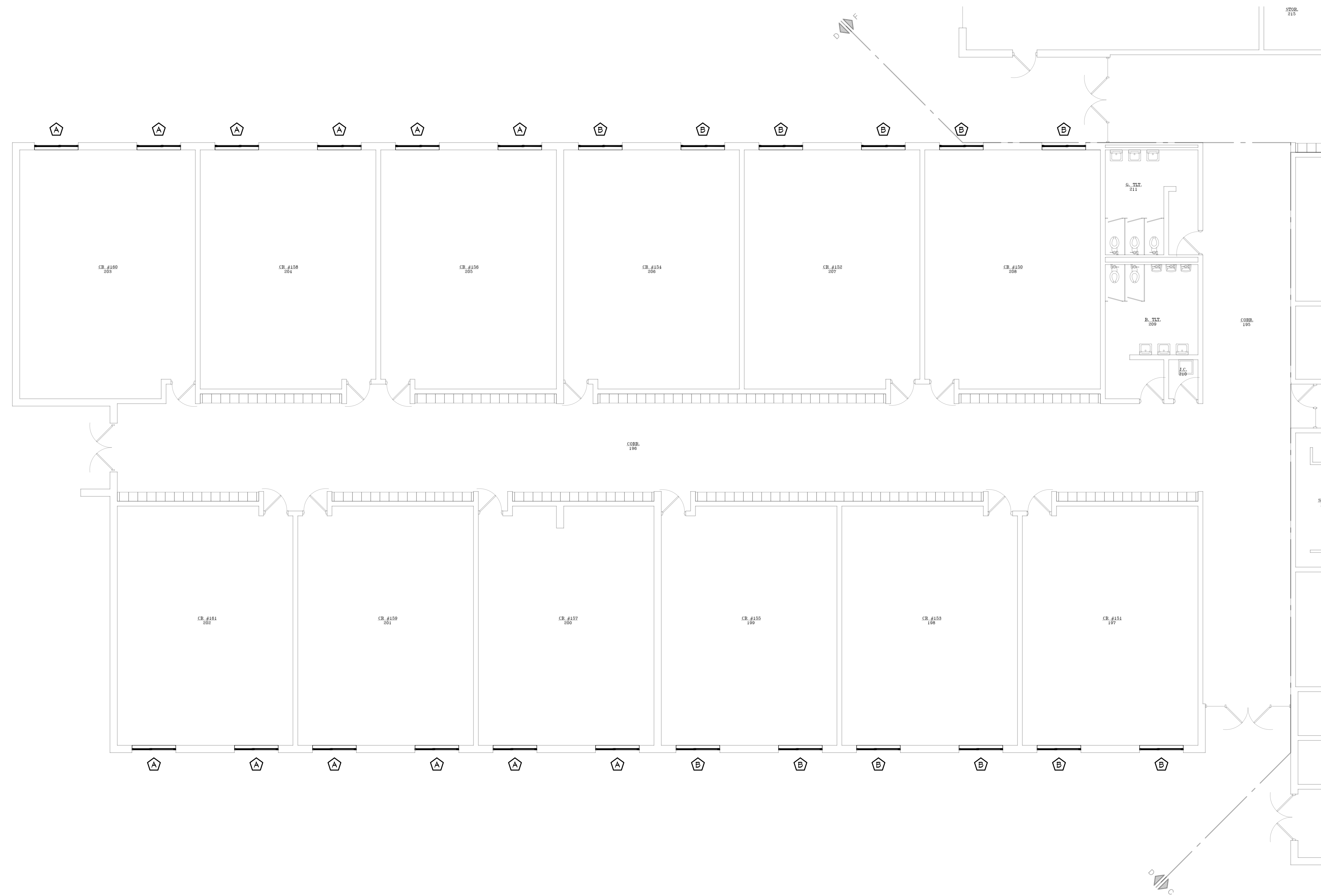
CONTRACTOR SHALL REMOVE EX'G FLOORING FINISHES AS REQ'D TO ALLOW FOR NEW CONSTRUCTION AND/OR THE INSTALLATION OF NEW FINISHES AS NOTED.

MODIFICATION OF BUILDING STRUCTURAL LOAD BEARING MEMBERS EXCEPT AS DESCRIBED HEREIN OR APPROVED BY THE ARCHITECT IN WRITING IS STRICTLY PROHIBITED. STRUCTURAL MODIFICATIONS DEPICTED HEREIN ARE BASED UPON INFORMATION DERIVED FROM THE OWNERS RECORD. CONTRACTOR SHALL REMOVE FINISHES FROM FRAMING AND SHALL CONSULT ARCHITECT FOR DIRECTION ON MODIFICATION OR REMOVAL OF LOAD BEARING STRUCTURAL ITEMS (WALLS, COLLUMS, BEAMS, JOISTS, AND TRUSSES) NOT SPECIFICALLY INDICATED HEREIN.

**KEYED DEMOLITION NOTES**

(D1) REMOVE WINDOW UNIT BACK TO ROUGH OPENING.





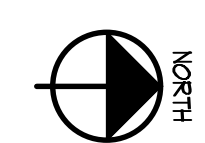
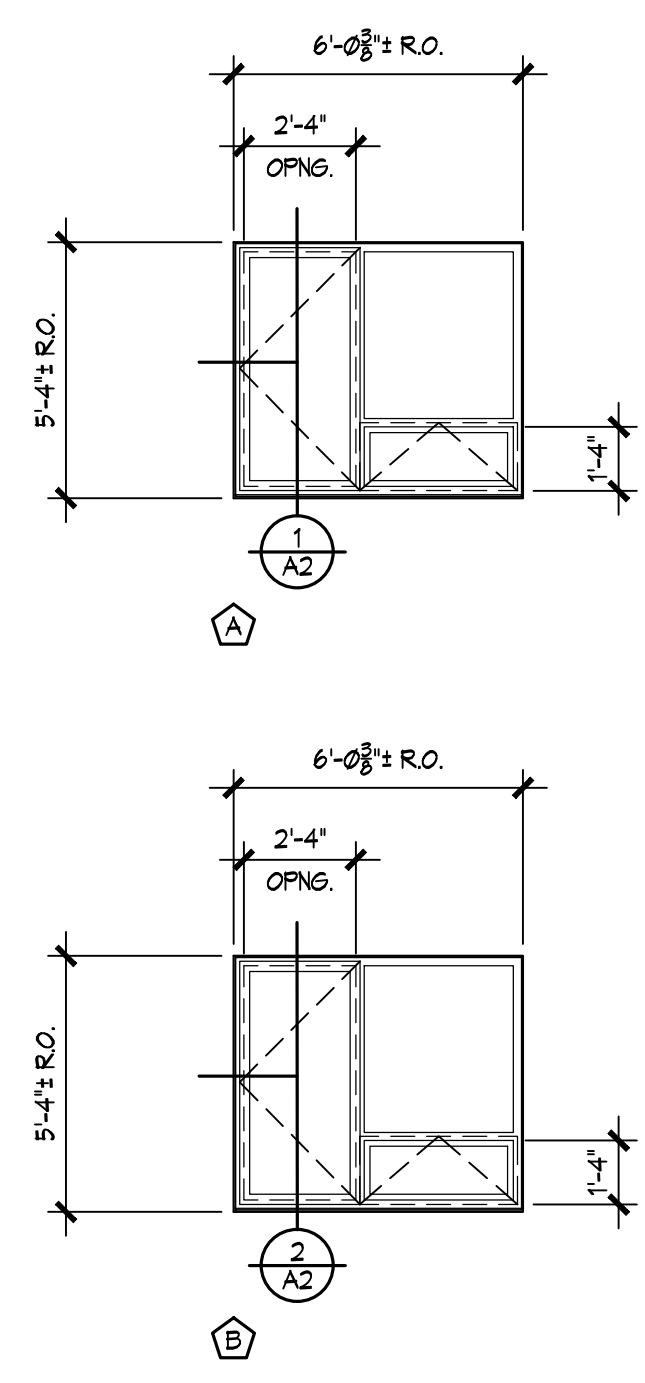
**GENERAL CONST. NOTES**

CONTRACTOR SHALL VERIFY AND COORDINATE ALL ROUGH OPENING DIMENSIONS POST DEMOLITION WITH APPROVED WINDOW SUBMITTALS. EXISTING CONDITIONS ADVERSELY AFFECTING INSTALLATION OF NEW WINDOWS SHALL BE REPORTED TO THE ARCHITECT PRIOR TO PROCEEDING WITH INSTALLATION.

WINDOW INSTALLATION MAY REQUIRE REMOVAL AND REINSTALLATION OF WOOD TRIM AND/OR SAWCUTTING OF QUARRY TILE STOOLS IN ORDER TO ACCOMMODATE FRAME DEPTH OF NEW WINDOW UNIT. WINDOW INSTALLER SHALL UTILIZE THE SKILLS OF SKILLED TRADESMAN FOR ANY CUTTING AND/OR FINISH TRIM REMOVAL AND REINSTALLATION.

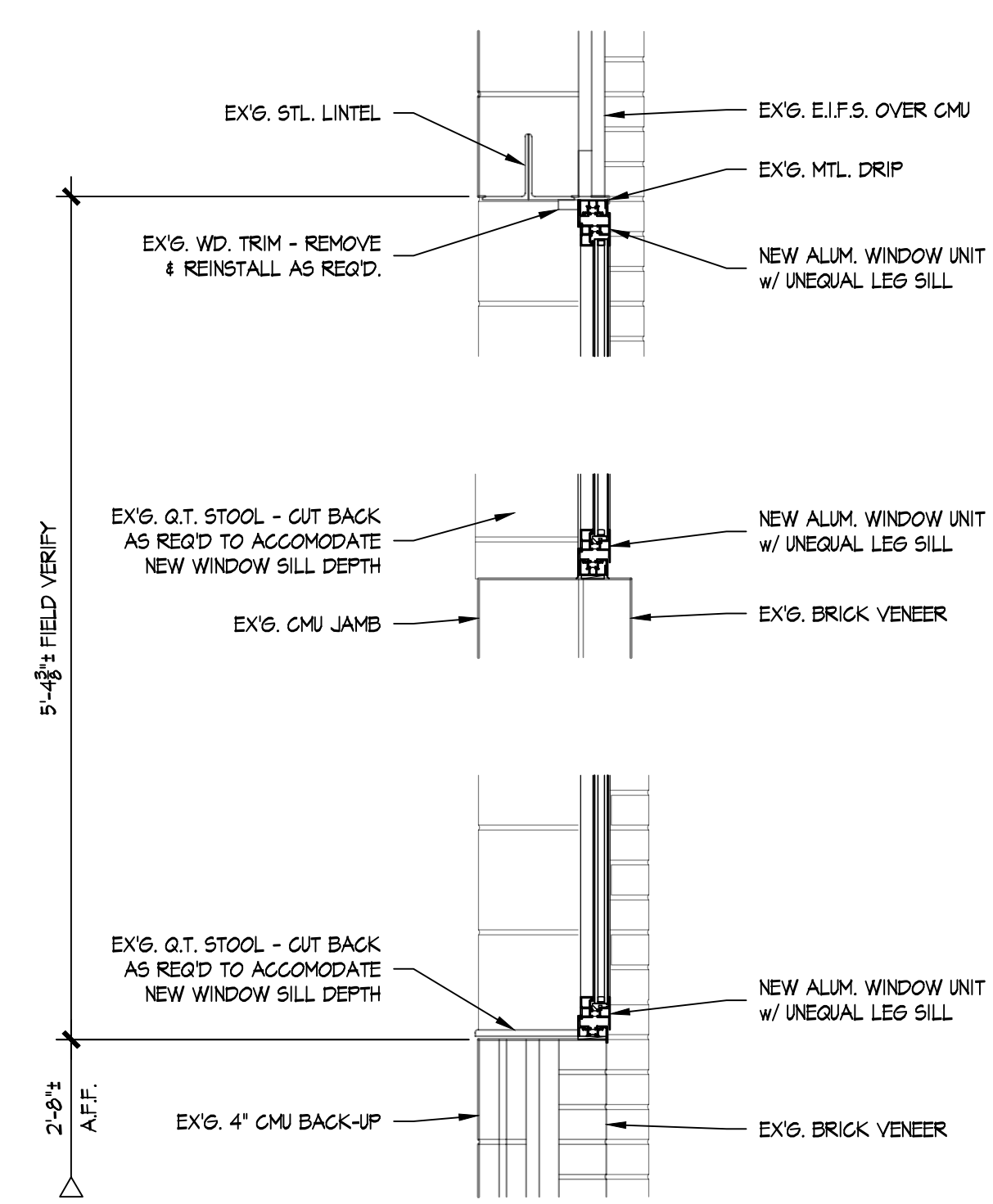
WINDOW INSTALL SHALL PROVIDE ALL ANCHORS, SHIMMING, AND SEALANTS REQUIRED TO FURNISH A COMPLETE AND WEATHER TIGHT WINDOW INSTALLATION.

WINDOW UNITS SHALL BE INSTALLED IN ACCORDANCE WITH WINDOW MANUFACTURERS STANDARD DETAILS AS APPLICABLE AND DEPICTED HEREIN.

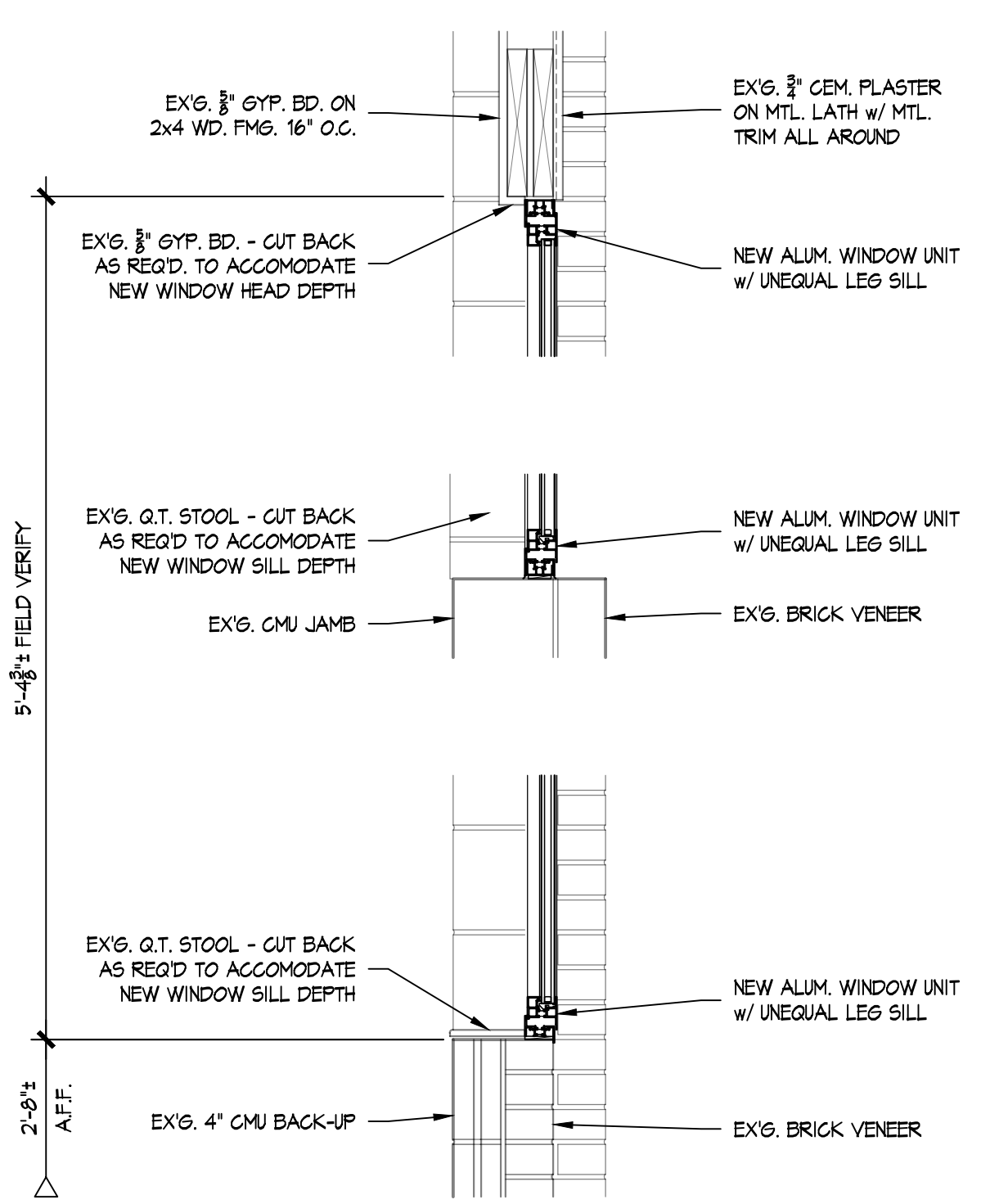


**FLOOR PLAN PART "D" - NEW WORK**

SCALE: 1/8" = 1'-0"



**HEAD/JAMB/SILL DETAIL**  
SCALE: 1" = 1'-0"



**HEAD/JAMB/SILL DETAIL**  
SCALE: 1" = 1'-0"

